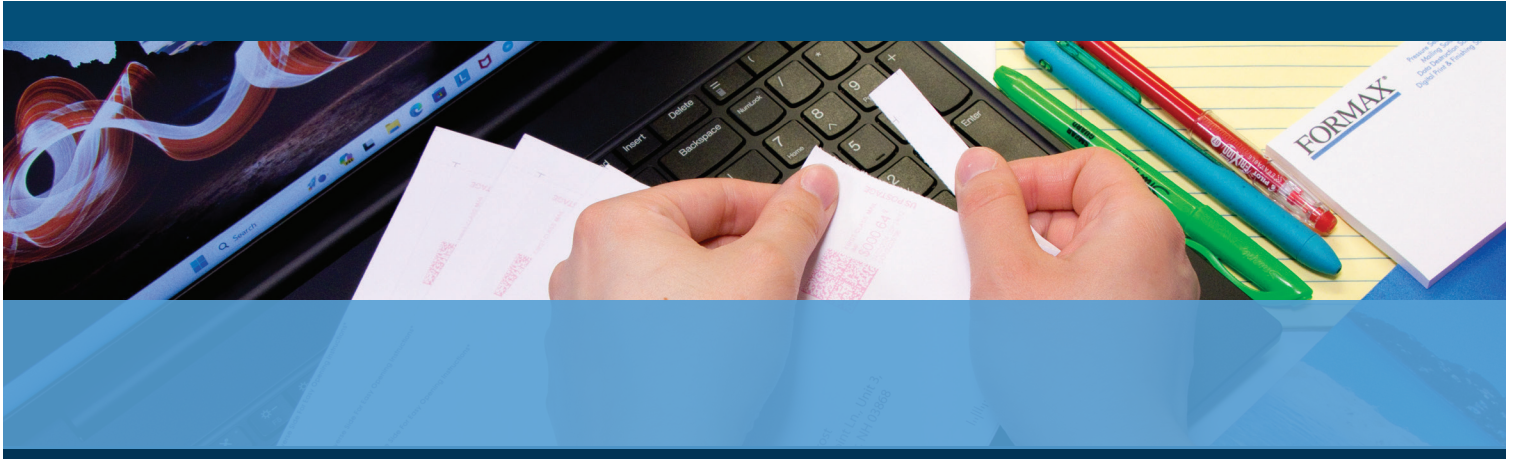




# AutoSeal® FD 1606

MID-VOLUME PRESSURE SEALER



- Automatic fold settings
- Color touchscreen control panel
- Processes up to 100 forms per minute
- Drop-in feed system
- Handles forms up to 14" long

## FORMAX®

[www.formax-equipment.com](http://www.formax-equipment.com)

Local Dealer:

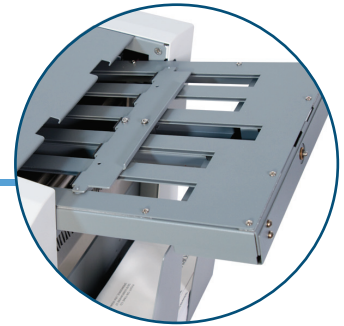
The **FD 1606 AutoSeal®** is the ultimate mid-volume pressure seal solution. **Automatic fold plates** allow users to easily switch between fold types and paper sizes, while the **full color touchscreen** guides users through setup and operation. Standard features include a **drop-in feed system**, **6-digit resettable counter**, and the ability to store **up to 3 custom jobs**. Pressure sensitive one-piece mailers can be used for checks, invoices, school reports, tax forms, direct mail pieces, and appointment notices, eliminating the added cost of envelopes. Options include an 18” output conveyor, reverse stacking conveyor, and FD 402 Series Jogger. **Proudly made in the USA**, the FD 1606 is built with proven Formax technology, and the durability to last.



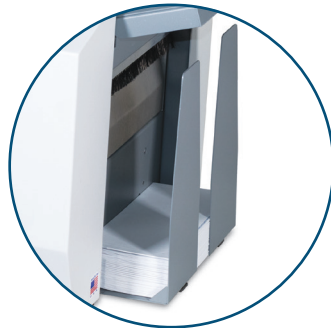
**Color Touchscreen Control Panel**  
Graphics-based and designed for easy, walk-up use



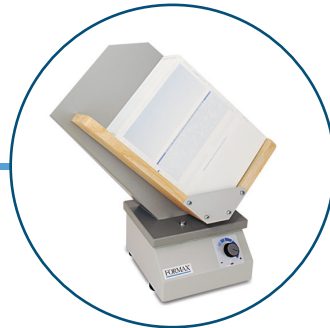
**Drop-In Feeding System**  
Dependable feeding of forms with no paper fanning required



**Automatic Fold Plates**  
Simply choose form size and fold type and the plates will adjust automatically



**Adjustable Catch Tray**  
Accommodates any fold type, stacks forms neatly and sequentially



**Optional 402 Series Jogger**  
Reduces static electricity from forms and aligns them for proper feeding

## STANDARD FEATURES

- Automatic fold plates
- Color touchscreen control panel
- Compact desktop design
- Drop-in top feed system
- 14” form length capability
- Processes up to 100 forms per minute
- Infeed holds up to 200 forms
- Simple set-up and operation
- Six-digit resettable counter
- Adjustable catch tray
- Adjustable side guides on hopper

## OPTIONS

- 18” Conveyor with photo eye
- Reverse Stacking Conveyor: Allows for A-to-Z input and A-to-Z output
- Locking Cabinet with casters
- 402 Series Jogger

## SPECIFICATIONS

Hopper Capacity	Up to 200 forms 20#
Fixed Speed	Up to 100 forms per minute, based on 11” Z fold
Paper Size	Up to 8.5” W x 14” L (216 x 356mm)
Fold Types	Z, C, Uneven Z and C, Half, Custom
Monthly Duty Cycle	Up to 35,000/month
Dimensions	24” L x 17” W x 13” H (610 x 432 x 330mm)
Weight	81 lbs (37kg)
Power	FD Model: 120 Volts AC 50/60Hz FE Model: 220 Volts AC 50/60Hz
Document Sequence	Standard sequence is A-to-Z input, Z-to-A output
Certifications	UL, CE, and CUL Approved
Made in USA	
U.S. Patents 5,772,841 5,865,925 5,968,308 6,264,592	