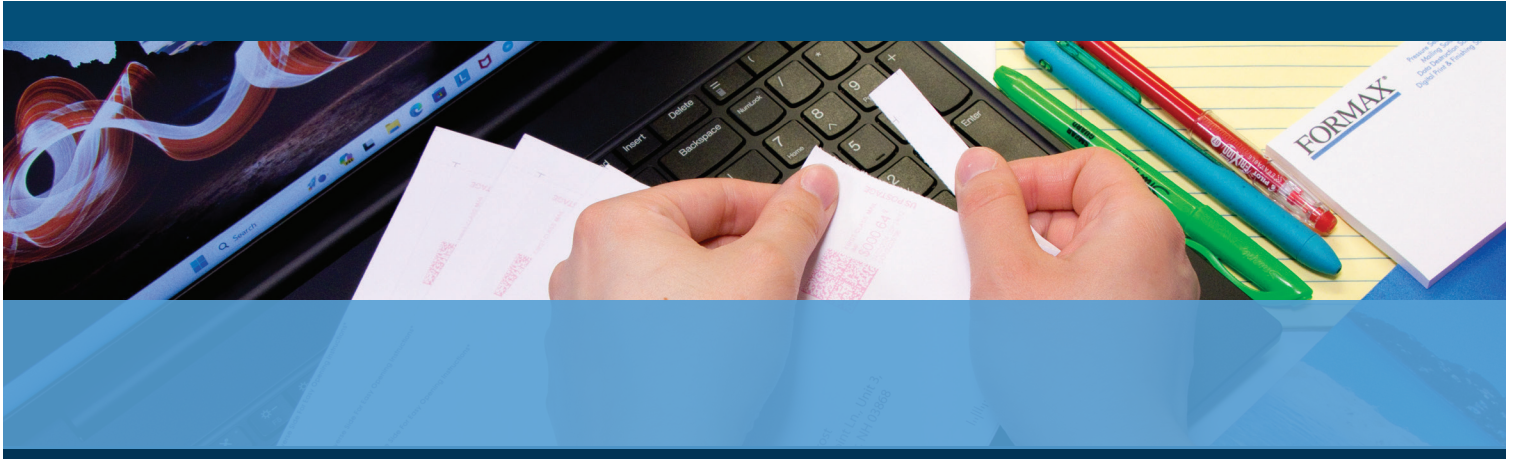




# AutoSeal<sup>®</sup> FD 1202

LOW-VOLUME PRESSURE SEALER



- Compact desktop design
- Drop-in feed system for dependability
- 5 pre-marked popular folds
- Processes up to 38 forms per minute
- Handles forms up to 14" long

## FORMAX<sup>®</sup>

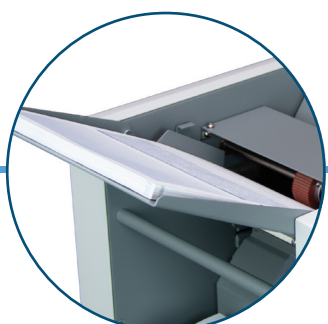
[www.formax-equipment.com](http://www.formax-equipment.com)

Local Dealer:

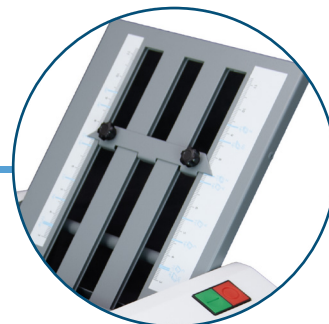
The **FD 1202 AutoSeal®** is a user-friendly solution for processing pressure-sensitive one-piece mailers. Combined with a laser printer and pressure seal forms, it creates secure, mail-ready pieces, without the need for envelopes. **Clearly marked fold plates**, simple **ergonomic controls** and a **drop-in feed system** provide easy set-up and operation, right out of the box. These features, plus a **compact desktop design**, make the FD 1202 ideal for any office environment with low-volume applications. It processes **up to 38 forms per minute**, and handles **forms up to 14" long** in a **variety of fold types**. **Proudly built in the USA** with proven Formax technology, the FD 1202 is an economical solution with the quality and reliability you can depend upon.



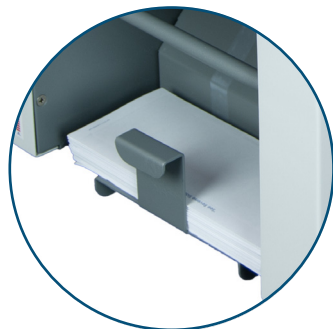
*Simple Ergonomic Controls*  
Easy to use start and stop buttons



*Drop-In Feeding System*  
Top loading infeed hopper holds up to 160 forms



*Clearly Marked Fold Plates*  
Marked with five of the most popular folds



*Adjustable Catch Tray*  
Provides neat, sequential stacking of processed forms



*Compatible with Various Forms & Folds*  
Forms up to 14" long, in Z, C, Uneven Z, Uneven C, Half & Custom folds

## STANDARD FEATURES

- Drop-in feed system
- Compact desktop design
- Handles forms up to 14" long
- Pre-marked for 5 popular folds
- Z, C, uneven Z, uneven C, half, and custom folds
- Adjustable catch tray
- Simple controls
- Processes up to 38 forms per minute
- Proudly made in the USA

## OPTIONS

- Locking cabinet with casters
- 402 Series Jogger

## SPECIFICATIONS

Hopper Capacity	Up to 160 forms 20#
Fixed Speed	Up to 38 forms per minute
Paper Size	Up to 8.5" W x 14" L (216 x 356mm)
Volume	Low volume
Power	FD Model: 120 Volts AC 50/60Hz FE Model: 220 Volts AC 50/60Hz
Dimensions	11.6" L x 14" W x 14.5" H (294 x 356 x 368mm)
Weight	55 lbs (25kg)
Safety Certifications	UL, CE
Made in the USA	