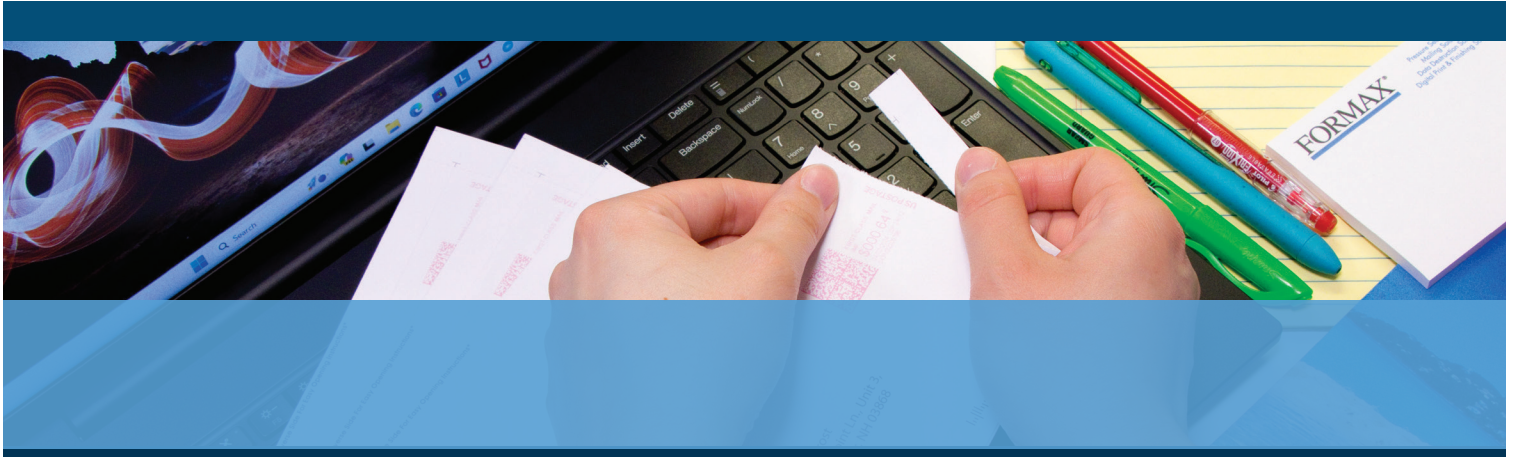




AutoSeal® FD 1406

LOW-VOLUME PRESSURE SEALER



- Color touchscreen control panel
- Drop-in feed system
- Six-digit resettable counter
- Processes up to 73 forms per minute
- Handles forms up to 14" long

FORMAX®

www.formax-equipment.com

Local Dealer:

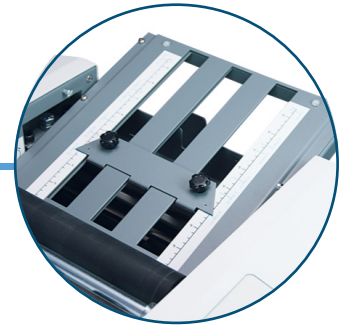
The **FD 1406 AutoSeal®** is a user-friendly low-volume solution for processing pressure sensitive mailers, frequently used for applications that can be printed on one sheet, including checks, invoices, school reports, and tax forms. It processes a variety of forms, **up to 14" in length**, at speeds of **up to 73 forms per minute**. Standard features include a **graphics-based color touchscreen, drop-in top feed system, adjustable catch tray**, and **clearly marked fold plates** that can be set for custom folds. Fold types include Z, C, Uneven Z and C, Half and custom. The FD 1406 is proudly **built in the USA** with proven Formax technology, and is ideal for any church, school, or small business looking to utilize the convenience of pressure seal forms.



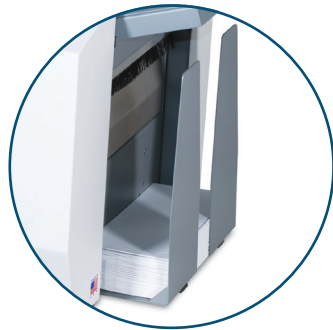
Color Touchscreen Control Panel
Graphics-based and designed for easy, walk-up use



Drop-In Feeding System
Produces dependable feeding of forms without paper fanning



Clearly Marked Fold Plates
Marked with five of the most popular folds



Adjustable Catch Tray
Accommodates any fold type, stacks forms neatly and sequentially



Compatible with Various Forms
Processes forms up to 14" long, in Z, C, Uneven Z/C, Half & Custom folds

STANDARD FEATURES

- Color touchscreen control panel
- Compact desktop design
- Drop-in top feed system
- 14" form length capability
- Processes up to 73 forms per minute
- Z, C, uneven Z and C, half and custom folds
- Hopper holds up to 160 forms
- Easy-to-adjust pre-marked fold plates
- Six-digit resettable counter
- Adjustable catch tray
- Adjustable infeed side guides

OPTIONS

- Locking cabinet with casters
- 402 Series Jogger

WARRANTY SUPPORT

The FD 1406 comes with a 90-day factory-direct warranty* that includes phone support and depot service.

The following optional on-site services are also available:

* On-site installation and training only (one visit), by our local provider

* Service Contract providing preventive maintenance and on-site support after the 90-day warranty. (On-site installation and training not included with service contract but available separately.)

SPECIFICATIONS

Hopper Capacity	Up to 160 forms 20#
Fixed Speed	Up to 73 forms per minute, based on 11" Z fold
Paper Size**	Up to 8.5" W x 14" L (216 x 356mm)
Monthly Duty Cycle	Up to 30,000/month
Dimensions	24" L x 17" W x 13" H (610 x 432 x 330mm)
Weight	81 lbs (37kg)
Power	120 Volts AC 50/60Hz
Certifications	UL, CE, and CUL Approved
Made in USA	

U.S. Patents 5,772,841 5,865,925 5,968,308 6,264,592

*90-day factory warranty begins at time of shipment to customers

** Will not process 14" uneven "o" forms. Will not process 14" uneven "Z" forms with an address panel less than 3 inches long.